

Embracing more sustainable treatments can have positive environmental, societal, and financial impacts on the communities we serve.



More sustainable because it works.



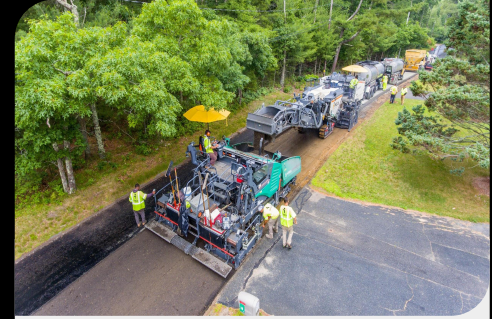
Delta Mist:

A bio-based rejuvenating fog seal, Delta Mist has no impact on plants and wildlife — making it safe to use in environmentally protected areas.



Cold In-place Recycling:

By reusing 100% of existing materials, cold in-place recycling can lower greenhouse gas emissions by up to 90%.



Paver-placed Stabilized Full Depth Reclamation:

Compared to traditional reclamation treatments, paver-placed stabilized full depth reclamation reduces energy consumption and greenhouse gas emissions by up to 60%.

Ask yourself these questions before every job:

1

Are we reducing greenhouse gas emissions compared to a traditional treatment?

2

Are we reducing driver delay times, which impacts emissions from idling vehicles?

3

Is this treatment the correct treatment for the road and will it yield the highest return on investment for the community?

When treatments use less aggregates and natural resources than traditional methods – and have a shorter construction time – **the answer is usually yes.**

Cut Spending

Post Copy:

More sustainable pavement preservation techniques like crack seal require less equipment and less materials. That puts more money back in agency pockets.



**Cut spending
by 10 to 30%.**

Fuel Costs

Post Copy:

Pavement preservation treatments like crack seal and fog seal rejuvenator can reduce driver fuel and maintenance costs.

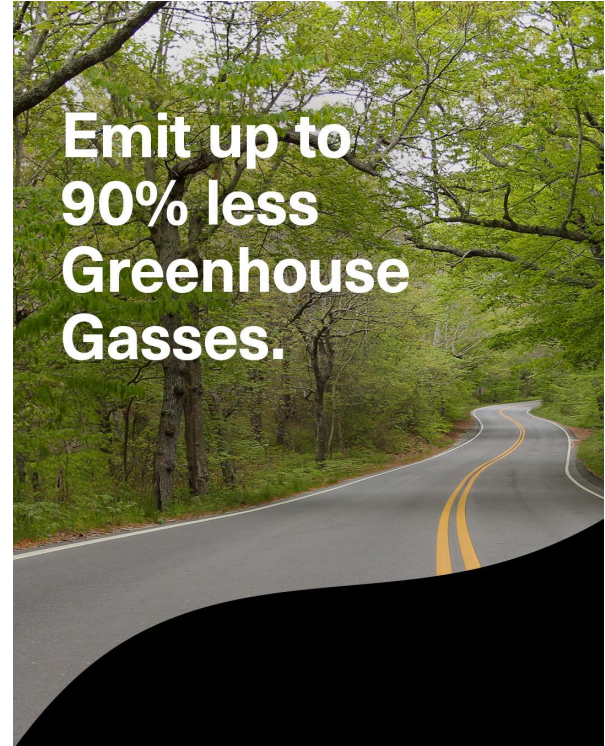


**Save drivers
up to 5% in
Fuel Costs.**

Greenhouse Gas

Post Copy:

Extending pavement life isn't just good for road networks. By requiring less frequent treatments, healthier roads keep air healthier too.



Less Cars

Post Copy:

Pavement preservation treatments like crack seal smooth pavement — reducing emission by 30 million metric tons per year. That's the equivalent of taking 6 million cars off the road.

